



Coldharbour Lane, Brixton, SW9

£399,950

1 bedroom flat - purpose built for sale

Property Details

A characterful one double bedroom flat within this popular Victorian mansion block, located a short walk from Brixton Village on thriving Coldharbour Lane. This lovely apartment is perfect for anyone who wants to be close to the action and comprises a bright open plan reception room, a spacious double bedroom complete with a bay window and a modern bathroom. The apartment is tucked away towards the rear of the property, perfectly positioned to avoid any road noise. The icing on the cake is the huge communal roof terrace, loved and cared for by the residents of Connaught Mansions.

Council tax band C

EPC rating (null)

Features

- One double bedroom
- Purpose built Victorian
- Period mansion block
- Characterful features
- Central location
- Close to transport links
- Communal roof terrace network
- Next to Brixton Village
- Bright and airy throughout



Coldharbour Lane, Brixton, SW9



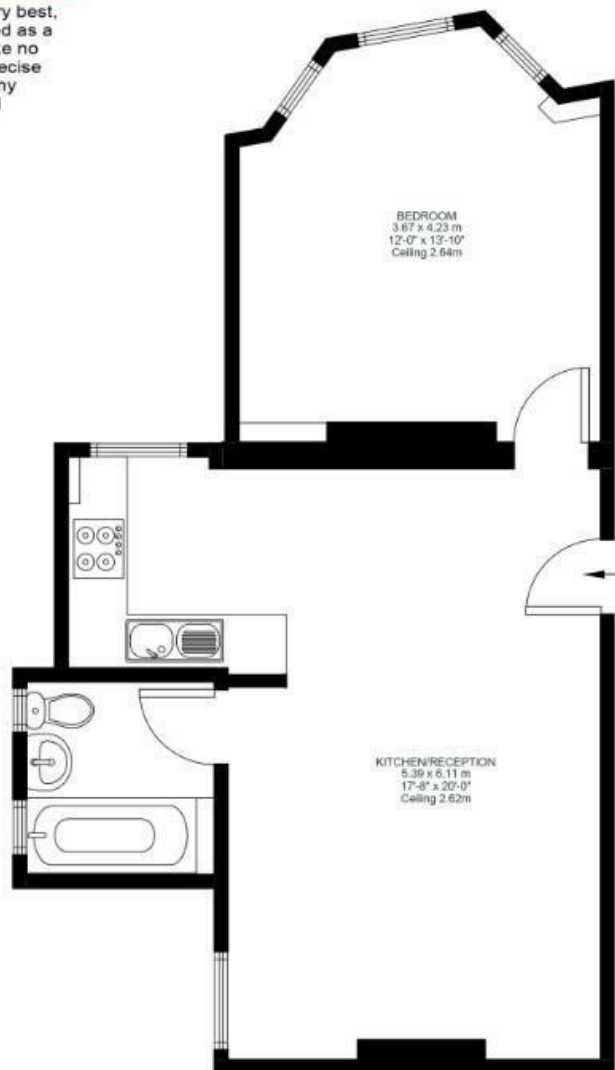
1 Bed flat

Approx internal area:

488 sqft 45 sqm

While we do try our very best, floor plans are produced as a guide only and we take no responsibility for the precise accuracy with which any property is represented

Coldharbour Lane



Third Floor



Coldharbour Lane, Brixton, SW9

